



Set Up & Synchronize

Palm OS is a registered trademark of Palm, Inc.

© 2002

Personalize your Handheld Computer

Vol. 551 issue 1

Palm OS® handhelds are simple and easy to set up and use. However, it is very important to understand the relationship between your Palm OS® Handheld, the desktop software and the Synchronization process. By the end of this guide, you will be able to identify all of the components that make the Palm OS® handheld work with your computer, install the desktop software, and perform your first HotSync® operation.



Reference!

Palm OS® handhelds will be referred throughout this guide as Handhelds.



Reference!

Palm OS® handhelds refer to Palm-branded products, Sony Clie product line, Handspring Visor, Edge, Treo product lines, IBM WorkPads, and more. For a complete list of devices – go to www.palm.com.



Reference!

The Desktop Software and the Software on your Handheld mirror each other. Both provide the core functions of a Calendar, an Address Book, a To Do list, and even Memos.

Illustrations courtesy of Palm, Inc.

What's in the box?

1. Your key components:



Handheld

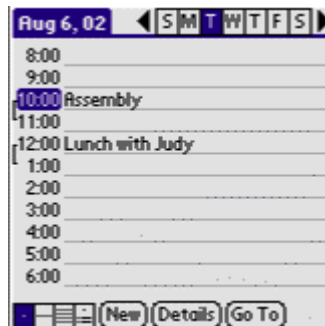


Desktop Software

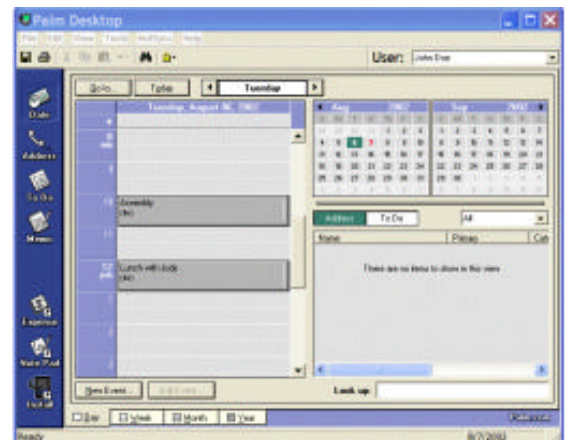


Cradle

2. Software on your Handheld and your desktop software are complimentary.



Palm™ Handheld Address Book



Palm™ Desktop Address Book

Connect the Cradle to the Computer