



# Design a Basic Web Site

© 2003

Using Dreamweaver MX (Mac OS X)

Vol. 426 Issue 7

**Macromedia Dreamweaver MX** is a professional HTML editor for designing, coding, and developing websites, web pages, and web applications. You can easily build a simple web site on your computer and upload it to a server so others can access it on the Internet. This guide is an introduction to the basics of Macromedia® Dreamweaver MX where you will define a site, create several pages, insert a table, anchors, links, images, and then be able to upload it to your remote server for all to see.



## Reference!

- A **website** represents a set of pages on a server viewed on the internet by a web browser.
- A **remote site** represents the files on the server that make up a website.
- A **local site** represents the files on your local disk that correspond to the files in the remote site.
- A **site definition** represents a set of defining characteristics for a local site and how it corresponds to a remote site.



## Reference!


Click New Folder to create a local root folder for your site. Make sure you know where and in which folder you are saving your new folder.

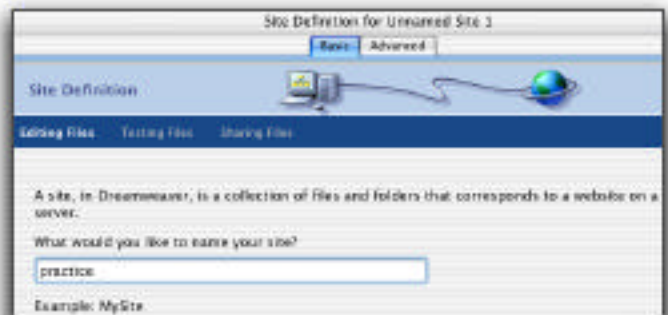


## Tip!

Do not put spaces between words in folders, capital letters, or the names will show up on the Internet as \$, %, &, or other characters you may not recognize. It is also best not to use the same web page names: shorten.

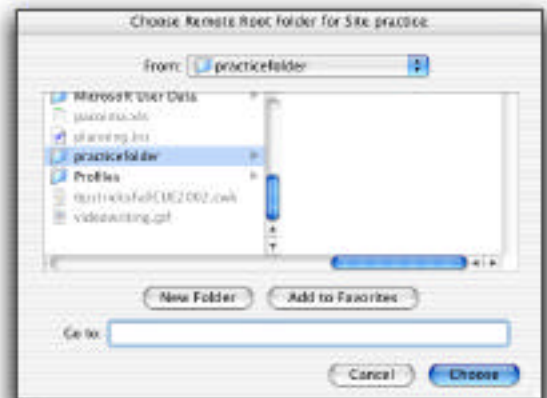
## Define Your Site

1. Launch Dreamweaver MX and select the Basic tab. 
2. Type in "practice" for the name of your site. Click **Next**.



3. Select "No, I do not want to use a server technology" then **Next**.
4. Select "Edit local copies on my machine, then upload to server when ready (recommended)" and Dreamweaver automatically puts the path to your file "practice." Click **Next**.

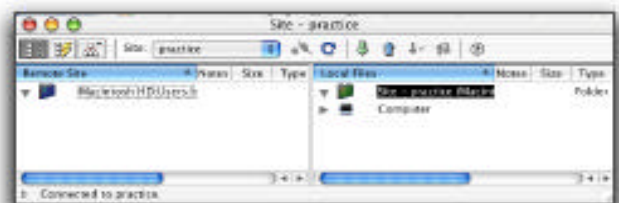
5. Choose **Local/Network** and click the folder to choose the folder to store your files.



6. Go to your home folder (/Users/your\_user\_name), navigate to a folder named Documents, create a folder inside it named "practicefolder", and click **Choose**.

7. Do not enable check in and check out at this time. Click **Next**.

8. A summary of your local site settings appears. Click Done and Remote and Local files show.



9. An "Untitled Document" awaits you.